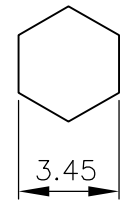


THIS DRAWING IS UNPUBLISHED. RELEASED FOR PUBLICATION APRIL, 2004.  
 © COPYRIGHT 2004 BY TYCO ELECTRONICS CORPORATION. ALL RIGHTS RESERVED.

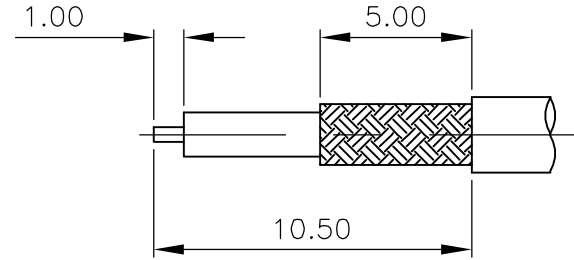
LOC	DIST	REVISIONS			
P	LTR	DESCRIPTION	DATE	DWN	APVD
E	B	A	EBD0-0035-03	04FEB04	RS FWK

- NOTES:
- ① SINGLE PACK IN ACCORDANCE WITH SPEC 107-3275
  - ② 100 TRAY PACK IN ACCORDANCE WITH SPEC 107-3275
  - ③ 0.08µm Au PLATING OVER 1.27µm Ni PLATING
  - ④ 0.08µm Au PLATING OVER 1.27µm Ni PLATING OVER 0.76µm Cu PLATING
  - ⑤ 0.76µm Au PLATING OVER 1.27µm Ni PLATING OVER 0.76µm Cu PLATING
  - ⑥ PASSIVATED
  - ⑦ WHITE BRONZE PLATING
  - ⑧ PLATING AS PER BODY, EXCEPT FOR PASSIVATED WHICH IS NICKEL PLATED
  - 9 HAND TOOL 9-1478240-0
  - 10 DIE SET 9-1478248-0
  - 11 FOR TECHNICAL DATA REFER TO YOUR LOCAL TYCO ELECTRONICS SALES OFFICE
  - 12 ALL DIMENSIONS ARE NOMINAL FOR REFERENCE ONLY UNLESS OTHERWISE STATED

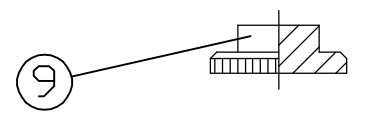
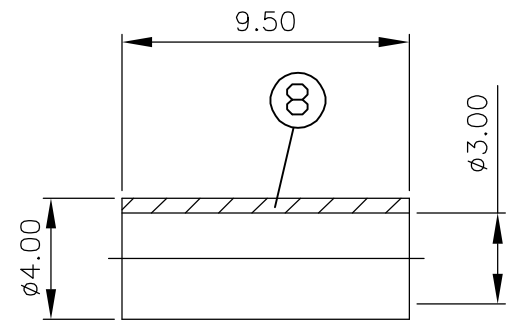
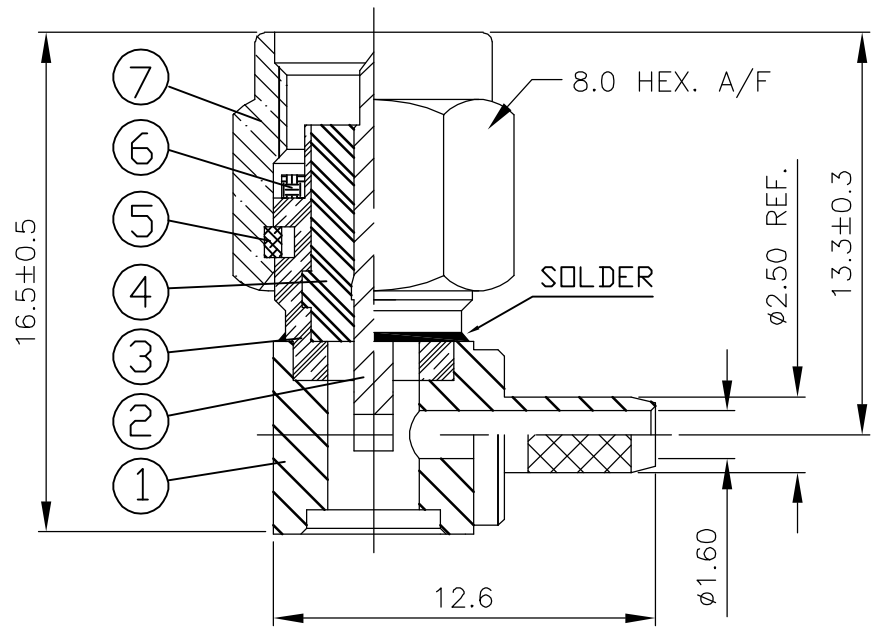
RECOMMENDED  
CRIMP SLEEVE  
A/F HEX



RECOMMENDED  
CABLE STRIPPING DIM'S



1	1	-	-	-	-	-	-	BRASS	⑦	CAP	9
-	-	1	1	-	-	-	-	BRASS	④	CAP	9
-	-	-	-	1	1	-	-	STAINLESS STEEL	⑥	CAP	9
-	-	-	-	-	-	1	1	STAINLESS STEEL	③	CAP	9
1	1	1	1	1	1	1	1	BRASS	⑧	CRIMP SLEEVE	8
1	1	-	-	-	-	-	-	BRASS	⑦	SHELL	7
-	-	1	1	-	-	-	-	BRASS	④	SHELL	7
-	-	-	-	1	1	-	-	STAINLESS STEEL	⑥	SHELL	7
-	-	-	-	-	-	1	1	STAINLESS STEEL	③	SHELL	7
1	1	1	1	1	1	1	1	SILICON		GASKET	6
1	1	1	1	1	1	1	1	STAINLESS STEEL		CIRCLIP	5
1	1	1	1	1	1	1	1	PTFE		INSULATOR	4
1	1	-	-	-	-	-	-	BRASS	⑦	BODY	3
-	-	1	1	-	-	-	-	BRASS	④	BODY	3
-	-	-	-	1	1	-	-	STAINLESS STEEL	⑥	BODY	3
-	-	-	-	-	-	1	1	STAINLESS STEEL	③	BODY	3
1	1	1	1	1	1	1	1	BRASS	⑤	CENTER CONTACT	2
1	1	-	-	-	-	-	-	BRASS	⑦	BODY	1
-	-	1	1	-	-	-	-	BRASS	④	BODY	1
-	-	-	-	1	1	-	-	STAINLESS STEEL	⑥	BODY	1
-	-	-	-	-	-	1	1	STAINLESS STEEL	③	BODY	1
4--1	4--0	3--1	3--0	2--1	2--0	1--1	1--0	MATERIAL		DESCRIPTION	ITEM
②	①	②	①	②	①	②	①				



THIS DRAWING IS A CONTROLLED DOCUMENT.		DWN R.SMITH 04FEB04	Tyco Electronics Corporation Bideford, UK, EX39 4HE	
DIMENSIONS: mm		CHK S.PARLOW 04FEB04		
TOLERANCES UNLESS OTHERWISE SPECIFIED:		APVD F.WHEELER-KING 04FEB04	NAME	
0 PLC ± -		PRODUCT SPEC 108-3460	SMA RIGHT ANGLE CRIMP ATTACHMENT	
1 PLC ± -		APPLICATION SPEC 411-3276	CAPTIVE CONTACT	
2 PLC ± -		WEIGHT -	SIZE A3	CAGE CODE 00779
3 PLC ± -		CUSTOMER DRAWING	DRAWING NO C-1478924	
4 PLC ± -			RESTRICTED TO	
ANGLES ± -			SCALE 1:1	SHEET 1 OF 1
FINISH -			REV A	